

THE
i2i
CROSS

The i2i Features	4
Unique Shape	4
Anterior Arms	4
Lateral Components	4
Ear Cutouts	5
Adjustable Arms and Locking Mechanism	5
Chin Prompt	5

Clinical Indicators	6
How to Assess for i2i	7
The i2i Anatomy	9
i2i Profile Options	10
Add-ons for i2i	11
Additional Configurations	12





i2i Upper Torso Positioning System

The i2i System was developed by Leslie Fitzsimmons PT, ATP who tried all available options for her most challenging students at Lakeview School in New Jersey. When nothing worked, she designed the i2i System which finally met her client's head positioning needs.



a Stealth Product

The i2i Features

Unique Shape

The unique, integrated shape of the i2i provides a foundational connection between the head and neck, providing support at the suboccipital shelf as well as the occiput, depending on the profile height. This shape supports the head while limiting neck hyperextension.

Anterior Arms

Anterior arms promote a midline head position without obstructing shoulder movement. These prevent the client from **hooking** under the head support and also support the **chin prompt**.

Lateral Components

Optional lateral pads limit neck rotation and lateral flexion. Individuals with muscle weakness and reduced head control may require the pads to be in close proximity to the head.

Swing-Away temporal pads can be added to provide additional anterior or lateral support of the head. Switches can be mounted at either side of the head to access assistive technology devices.

Increased muscle tone and forceful movements can lead to loss of head pad alignment or even hardware damage. The **tone deflector** absorbs and diffuses these forces to protect both the client from injury and the equipment from damage.



The i2i Features ... continue

Chin Prompt

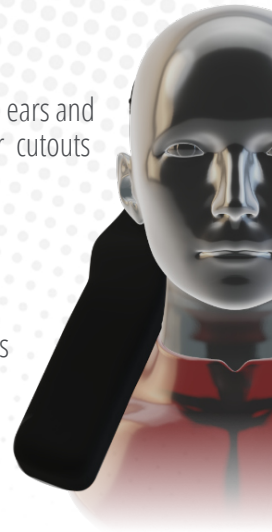
The chin prompt is to provide a prompt when contacted to lift the head. it can be raised and lowered, making it an excellent therapeutic tool to encourage neck muscle strengthening. The chin prompt was carefully designed to prevent airway obstruction or individual's chin from rolling over the front. The closed cell foam prevents sinking into the support and the straps are designed to slide off the i2i if too much pressure is exerted. A custom chin prompt is also available specifically designed for a client with a trach.

Ear Cutouts

The cutouts are specifically designed to minimize contact with the ears and specifically folding of the ears during head turning. The ear cutouts lessen friction and pressure, thereby reducing irritation.

Adjustable Arms and Locking Mechanism

Adjustable anterior arms move laterally to ease transfers and removal of the i2i support. Once moved laterally, the anterior arms lock in place to maintain position.



Clinical Indicators

So, when it is appropriate to consider the i2i as an option for a client?



A To avoid contact with the occiput: as the i2i does not directly contact the occipital area (unless an additional pad is added), this design works well for clients who tend to extend in response to contact with this area of the skull.

B To encourage midline position: the arms, in combination with the lateral contact at either side of the neck, encourage a midline position for clients who rotate or laterally flex the neck.

C To prevent hooking: the arms also prevent 'hooking.' Some of our clients tend to drop their head forward and then lift the head into lateral flexion, sometimes getting stuck between the bottom of the head support and the top of the back.

D To minimize neck hyperextension: the height of the posterior portion of the i2i can be customized. A higher profile option provides significant support at the suboccipital area, limiting neck hyperextension.

E To encourage an upright head position: the chin prompt encourages the client to keep their head upright. When the client's chin contacts the prompt, the client is cued to lift their head.



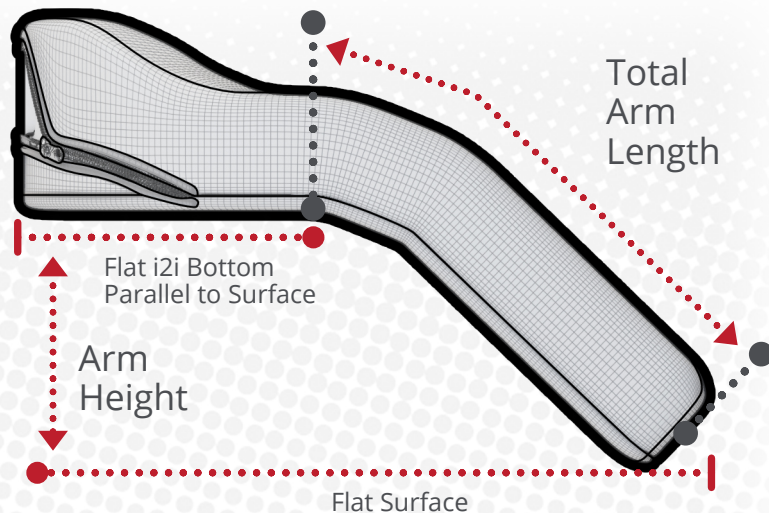
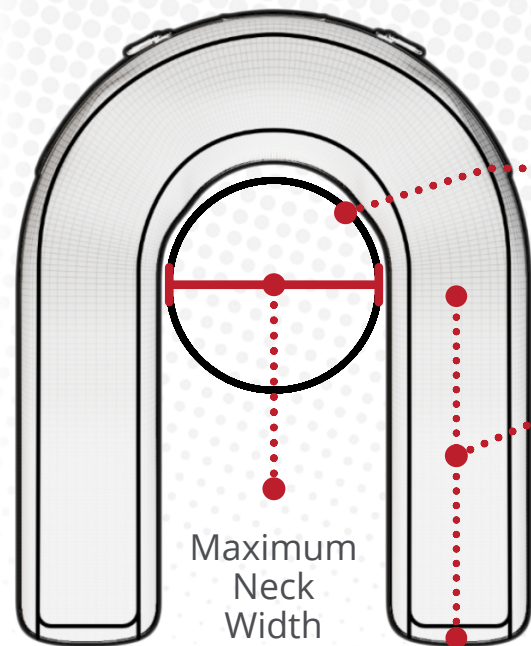
How to Assess for i2i

Maximum Neck Circumference

Refers to the total distance around the neck

Maximum Neck Width

Refers to the neck diameter

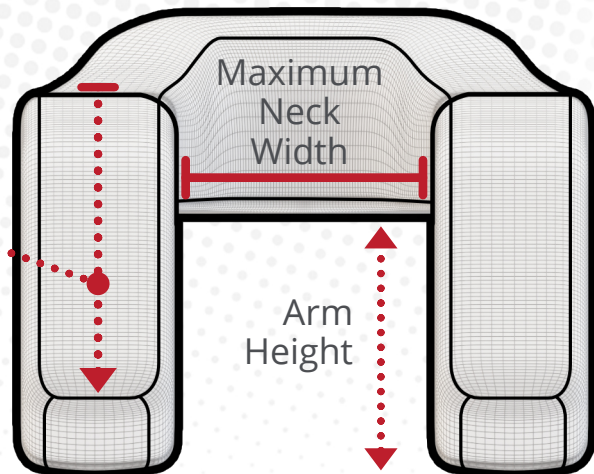


Maximum Neck Circumference

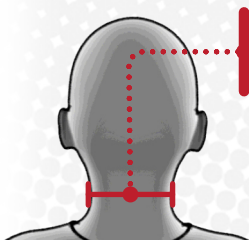
Total Arm Length

Maximum Neck Width

Arm Height



How to Assess for i2i



Client's Neck Width

Remember, neck circumference and neck width is not the same. Neck width refers to the client's approximate neck diameter while the circumference refers to the total distance around the neck.

Pad Assessment Reference

i2i.50

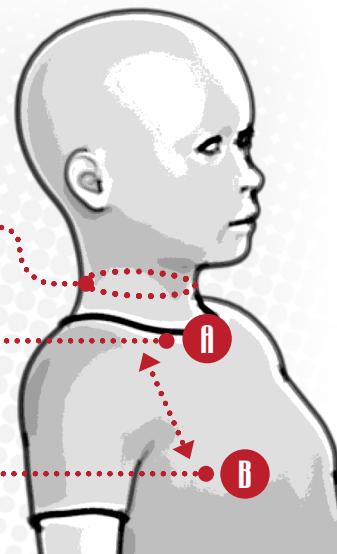
The fourth digit of the pad item number and it's default values can help you determine which pad size to order based on client's dimensions.

Determine i2i arm height by measuring from the client's clavicle height (A) to the lower sternum (B).

Client's Neck Circumference

Clavicle Height

Lower Sternum



	Size	Maximum Neck Width	Maximum Neck Circumference	Initial Total Arms Height		Initial Total Arms Length	
				Short	Standard	Short	Standard
2	Early Intervention	3 in (7.62cm)	9 ¹³ / ₃₂ in (23.93cm)	3 in (5.28cm)	N/A	4 ½ in (11.43cm)	N/A
3	Extra Small	3 ½ in (8.89cm)	11 in (27.94cm)	3 in (5.28cm)	N/A	4 ½ in (11.43cm)	N/A
4	Small	4 in (10.16cm)	12 ⁹ / ₁₆ in (31.90cm)	3 in (5.28cm)	5 in (12.70cm)	4 ½ in (11.43cm)	6 ½ in (16.51cm)
5	Medium	4 ½ in (11.43cm)	14 ¹ / ₈ in (35.89cm)	4 in (10.16cm)	6 in (15.24cm)	5 ½ in (13.97cm)	7 ½ in (19.05cm)
6	Large	5 in (11.43cm)	15 ¹¹ / ₁₆ in (39.88cm)	4 ½ in (11.43cm)	6 ½ in (16.51cm)	6 in (15.24cm)	8 in (20.32cm)
7	Extra Large	5 ¾ in (11.43cm)	18 in (45.72cm)	4 ¾ in (12.07cm)	7 in (17.78cm)	6 ¼ in (15.88cm)	9 in (22.86cm)

The i2i Anatomy

Metal Frame

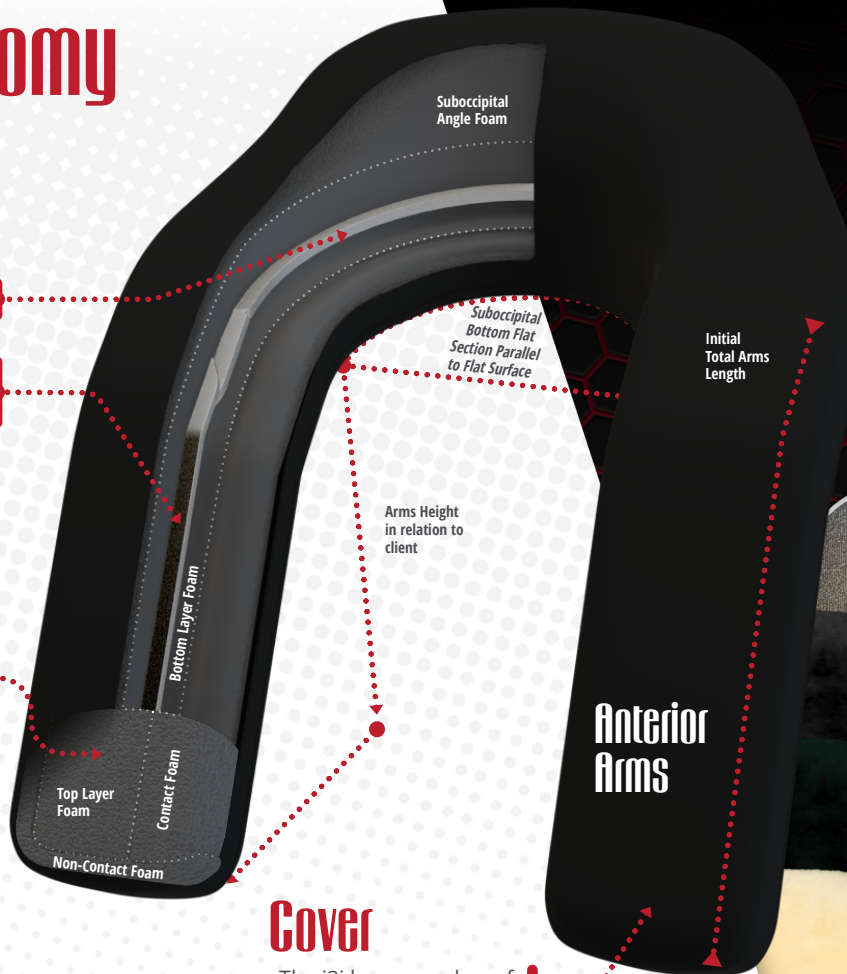
The frame is made out of metal that adds structural stability.

The adjustable version, as shown, also includes metal arms with same specifications.

Hand Layered Foam

The i2i's frame is covered with closed cell foam by hand. The foam comes in two different configurations, Standard (High) Profile and Low Profile (shown).

Specific materials can be chosen to meet individual's needs. For example solid gel inserts and other custom modifications including foam selections for the contact areas.



Cover

The i2i has a number of cover options including Neoprene (standard), Glideskin and Sheepskin.

i2i Profile Options

Standard Profile

The standard has a higher profile option which provides significant support at the suboccipital area, limiting neck hyperextension.

Low Profile

The lower profile option works well for client's who have a shorter neck length or who will be using a separate occipital support.

i2i 50 Pad Profile Reference

The fourth digit of the pad item number determines profile height.

NOTE: Pediatric standard profile is low profile.

	Standard Profile	Low Profile
2	2 ¼ in (5.72cm)	N/A
3	2 ¼ in (5.72cm)	N/A
4	4 in (10.16cm)	2 ¼ in (5.72cm)
5	4 ¾ in (12.07cm)	2 ¼ in (5.72cm)
6	5 ¼ in (13.34cm)	2 ¼ in (5.72cm)
7	6 in (15.24cm)	2 ¼ in (5.72cm)

Swing Away Receiver



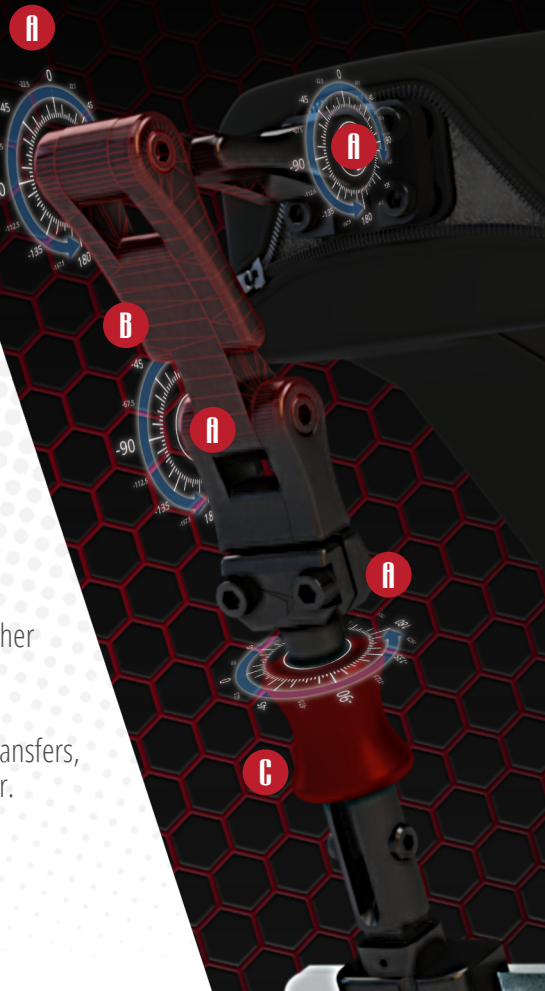
Our swing away receiver support temporal pads for lateral support, switches for access to external assistive technology devices, or even a chin joystick.

UniLink Head Solutions Flip Down Mount

The i2i swings away to facilitate ease of transfer, using our flip-back mounting hardware. Other benefits of the UniLink Head Solutions Flip Down hardware are:

- A** Multiple planes of adjustment allow for critical positioning of the pad to accommodate complex needs.
- B** Links can be added or removed to achieve desired outcomes.
- C** Flip back allows for easier transfers, the hardware stays on the chair.
- D** Single tool adjustment.

Add-ons for i2i



Additional Configurations

UniLink Ultra

The i2i can be used as the suboccipital pad on the UniLink Ultra Head Solutions hardware to provide additional posterior support, as needed.



The i-Drive is an advanced alternative drive control for operating a power wheelchair. Stealth's i2i upper torso positioning system supports the client in a midline and upright position for driving.





<https://stealthproducts.com>

+1 (800) 965-9229

+1 (512) 715-9995

info@stealthproducts.com



104 John Kelly Drive, Building A, Burnet, TX 78654